

CSHS Marching Band Warm Up

Long Tones for Tuba

9 Count Tones on F Concert

Two staves of musical notation in bass clef, 4/4 time. The first staff begins with a 4-measure rest, followed by a sequence of notes: F2 (half), G2 (quarter), A2 (quarter), Bb2 (quarter), C3 (half). The second staff continues with: D3 (half), E3 (quarter), F3 (quarter), G3 (quarter), A3 (half). The notes are grouped into pairs with slurs and accents.

9 Count Tones on Bb Concert

Two staves of musical notation in bass clef, 4/4 time. The first staff begins with a 4-measure rest, followed by a sequence of notes: Bb2 (half), C3 (quarter), D3 (quarter), Eb3 (quarter), F3 (half). The second staff continues with: G3 (half), A3 (quarter), Bb3 (quarter), C4 (quarter), D4 (half). The notes are grouped into pairs with slurs and accents.

8 Count Tones on F Concert

Two staves of musical notation in bass clef, 4/4 time. The first staff begins with a 4-measure rest, followed by a sequence of notes: F2 (half), G2 (quarter), A2 (quarter), Bb2 (quarter), C3 (half). The second staff continues with: D3 (half), E3 (quarter), F3 (quarter), G3 (quarter), A3 (half). The notes are grouped into pairs with slurs and accents.

8 Count Tones on Bb Concert

Two staves of musical notation in bass clef, 4/4 time. The first staff begins with a 4-measure rest, followed by a sequence of notes: Bb2 (half), C3 (quarter), D3 (quarter), Eb3 (quarter), F3 (half). The second staff continues with: G3 (half), A3 (quarter), Bb3 (quarter), C4 (quarter), D4 (half). The notes are grouped into pairs with slurs and accents.

CSHS Marching Band Warm Up

Flexability/Scales for Tuba

Flexibility Exercise 1

Flexibility Exercise 1 is a 4-measure exercise in 4/4 time, written for Tuba. The key signature has one flat (B-flat). The exercise consists of three phrases, each with a slur and a fermata at the end. The first phrase contains notes G2, F2, E2, D2, C2, B1, A1, G1. The second phrase contains notes G1, F1, E1, D1, C1, B0, A0, G0. The third phrase contains notes G0, F0, E0, D0, C0, B-1, A-1, G-1.

Flexibility Exercise 2

Flexibility Exercise 2 is a 7-measure exercise in 4/4 time, written for Tuba. The key signature has two flats (B-flat and E-flat). The exercise consists of seven phrases, each with a slur and a fermata at the end. The notes are: G2, F2, E2, D2, C2, B1, A1, G1; G1, F1, E1, D1, C1, B0, A0, G0; G0, F0, E0, D0, C0, B-1, A-1, G-1; G-1, F-1, E-1, D-1, C-1, B-2, A-2, G-2; G-2, F-2, E-2, D-2, C-2, B-3, A-3, G-3; G-3, F-3, E-3, D-3, C-3, B-4, A-4, G-4; G-4, F-4, E-4, D-4, C-4, B-5, A-5, G-5.

Flexibility Exercise 3

Musical notation for Flexibility Exercise 3, consisting of six staves of music in bass clef with a key signature of two flats. The exercise features a variety of rhythmic patterns and melodic lines, including slurs and rests, designed to improve flexibility and range.

Flexibility Exercise 4

Musical notation for Flexibility Exercise 4, consisting of five staves of music in bass clef with a key signature of two flats. This exercise focuses on rhythmic patterns and melodic lines, including slurs and rests, designed to improve flexibility and range.

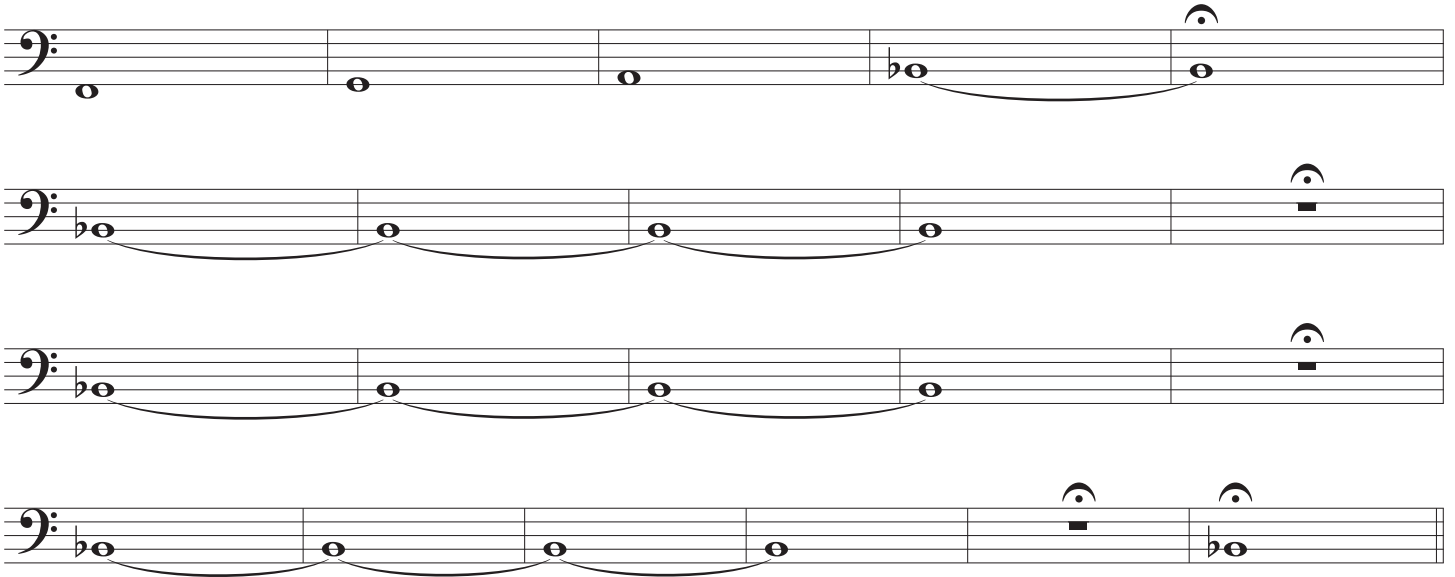
CSHS Marching Band Warm Up

Tuba - Tuning & Chorales

Tuning Notes



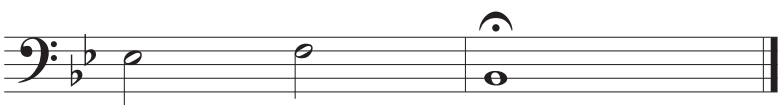
Tuning Sequence



3 Note Chorale



Bb - 3 Note Chorale



Bb Chorale - Chester

Musical notation for the Bb Chorale 'Chester' in bass clef, 2/4 time. The piece consists of 16 measures. Measures 1-6 are marked *mf*, measures 7-8 are marked *mp*, and measures 15-16 are marked *f*. The melody is written on a single staff with various articulations and dynamics.

F Chorale - Be Thou My Vision

Musical notation for the F Chorale 'Be Thou My Vision' in bass clef, 3/4 time. The piece consists of 17 measures. The melody is written on a single staff with various articulations and dynamics.

Eb Bach Chorale

Musical notation for the Eb Bach Chorale in bass clef, 4/4 time. The piece consists of 13 measures. The melody is written on a single staff with various articulations and dynamics.

CSHS Marching Band Warm Up

Articulations - Tuba

1 3 5 7

9 11 13

15 17

19 21 23

25 28

30 32

34 37

39

Detailed description: This musical score is for a Tuba part, titled 'Articulations - Tuba'. It consists of nine measures of music, numbered 1 through 39. The key signature has one flat (B-flat), and the time signature is 4/4. The score is written on a single bass clef staff. Measure 1 starts with a whole note chord of B-flat and G. Measure 2 is a whole rest. Measure 3 has a whole note chord of B-flat and G. Measure 4 is a whole rest. Measure 5 has a quarter note chord of B-flat and G. Measure 6 is a whole rest. Measure 7 has a quarter note chord of B-flat and G. Measure 8 is a whole rest. Measure 9 has a quarter note chord of B-flat and G. Measure 10 is a whole rest. Measure 11 has a quarter note chord of B-flat and G. Measure 12 is a whole rest. Measure 13 has a quarter note chord of B-flat and G. Measure 14 is a whole rest. Measure 15 has a quarter note chord of B-flat and G. Measure 16 is a whole rest. Measure 17 has a quarter note chord of B-flat and G. Measure 18 is a whole rest. Measure 19 has a quarter note chord of B-flat and G. Measure 20 is a whole rest. Measure 21 has a quarter note chord of B-flat and G. Measure 22 is a whole rest. Measure 23 has a quarter note chord of B-flat and G. Measure 24 is a whole rest. Measure 25 has a quarter note chord of B-flat and G. Measure 26 is a whole rest. Measure 27 has a quarter note chord of B-flat and G. Measure 28 has a quarter note chord of B-flat and G. Measure 29 is a whole rest. Measure 30 has a quarter note chord of B-flat and G. Measure 31 is a whole rest. Measure 32 has a quarter note chord of B-flat and G. Measure 33 is a whole rest. Measure 34 has a quarter note chord of B-flat and G. Measure 35 is a whole rest. Measure 36 has a quarter note chord of B-flat and G. Measure 37 has a quarter note chord of B-flat and G. Measure 38 is a whole rest. Measure 39 has a quarter note chord of B-flat and G. The score includes various articulation marks such as accents (^), slurs, and dynamic markings like > (accent) and < (decrescendo).