

CSHS Marching Band Warm Up

Long Tones for Trumpet in B \flat

9 Count Tones on F Concert

Two staves of music in 4/4 time. The first staff contains a sequence of notes: F4 (quarter), G4 (quarter), A4 (quarter), B4 (quarter), C5 (quarter), B4 (quarter), A4 (quarter), G4 (quarter), F4 (quarter). The second staff contains a sequence of notes: F4 (quarter), G4 (quarter), A4 (quarter), B4 (quarter), C5 (quarter), B4 (quarter), A4 (quarter), G4 (quarter), F4 (quarter). The notes are connected by slurs, and there are rests in the second measure of each staff.

9 Count Tones on B \flat Concert

Two staves of music in 4/4 time. The first staff contains a sequence of notes: B \flat 3 (quarter), C4 (quarter), D4 (quarter), E4 (quarter), F4 (quarter), E4 (quarter), D4 (quarter), C4 (quarter), B \flat 3 (quarter). The second staff contains a sequence of notes: B \flat 3 (quarter), C4 (quarter), D4 (quarter), E4 (quarter), F4 (quarter), E4 (quarter), D4 (quarter), C4 (quarter), B \flat 3 (quarter). The notes are connected by slurs, and there are rests in the second measure of each staff.

8 Count Tones on F Concert

Two staves of music in 4/4 time. The first staff contains a sequence of notes: F4 (quarter), G4 (quarter), A4 (quarter), B4 (quarter), C5 (quarter), B4 (quarter), A4 (quarter), F4 (quarter). The second staff contains a sequence of notes: F4 (quarter), G4 (quarter), A4 (quarter), B4 (quarter), C5 (quarter), B4 (quarter), A4 (quarter), F4 (quarter). The notes are connected by slurs, and there are rests in the second measure of each staff.

8 Count Tones on B \flat Concert

Two staves of music in 4/4 time. The first staff contains a sequence of notes: B \flat 3 (quarter), C4 (quarter), D4 (quarter), E4 (quarter), F4 (quarter), E4 (quarter), D4 (quarter), B \flat 3 (quarter). The second staff contains a sequence of notes: B \flat 3 (quarter), C4 (quarter), D4 (quarter), E4 (quarter), F4 (quarter), E4 (quarter), D4 (quarter), B \flat 3 (quarter). The notes are connected by slurs, and there are rests in the second measure of each staff.

Beautiful Sounds for Trumpet/Mellophone

Smooth Movement Through All Registers

C Major (concert pitch)

Musical notation for C Major (concert pitch) in 4/4 time. The melody consists of two phrases, each with a slur over the first four notes. The first phrase starts on middle C and moves up stepwise to G4, then has a whole note rest. The second phrase starts on G4 and moves up stepwise to C5, then has a whole note rest. The key signature has one sharp (F#).

B \flat Major (concert pitch)

Musical notation for B \flat Major (concert pitch) in 4/4 time. The melody consists of two phrases, each with a slur over the first four notes. The first phrase starts on B \flat 3 and moves up stepwise to F4, then has a whole note rest. The second phrase starts on F4 and moves up stepwise to B \flat 4, then has a whole note rest. The key signature has two flats (B \flat , E \flat).

E \flat Major (concert pitch)

Musical notation for E \flat Major (concert pitch) in 4/4 time. The melody consists of two phrases, each with a slur over the first four notes. The first phrase starts on E \flat 3 and moves up stepwise to B \flat 3, then has a whole note rest. The second phrase starts on B \flat 3 and moves up stepwise to E \flat 4, then has a whole note rest. The key signature has three flats (B \flat , E \flat , A \flat).

A \flat Major (concert pitch)

Musical notation for A \flat Major (concert pitch) in 4/4 time. The melody consists of two phrases, each with a slur over the first four notes. The first phrase starts on A \flat 3 and moves up stepwise to E \flat 4, then has a whole note rest. The second phrase starts on E \flat 4 and moves up stepwise to A \flat 4, then has a whole note rest. The key signature has four flats (B \flat , E \flat , A \flat , D \flat).

F Major (concert pitch)

Musical notation for F Major (concert pitch) in 4/4 time. The melody consists of two phrases, each with a slur over the first four notes. The first phrase starts on F3 and moves up stepwise to C4, then has a whole note rest. The second phrase starts on C4 and moves up stepwise to F4, then has a whole note rest. The key signature has one flat (B \flat).

G Major (concert pitch)

Musical notation for G Major (concert pitch) in 4/4 time. The melody consists of two phrases, each with a slur over the first four notes. The first phrase starts on G3 and moves up stepwise to D4, then has a whole note rest. The second phrase starts on D4 and moves up stepwise to G4, then has a whole note rest. The key signature has two sharps (F#, C#).

F Major (concert pitch)

Musical notation for F Major (concert pitch) in 4/4 time. The melody consists of two phrases, each with a slur over the first four notes. The first phrase starts on F3 and moves up stepwise to C4, then has a whole note rest. The second phrase starts on C4 and moves up stepwise to F4, then has a whole note rest. The key signature has one flat (B \flat).

CSHS Marching Band Warm Up

Flexibility/Scales for Trumpet in B \flat

Flexibility Exercise 1

Flexibility Exercise 1 consists of three staves of music in 4/4 time. The first staff begins with a half note G4, followed by quarter notes A4, B4, and C5, then a half note rest. The second staff continues with a quarter note D5, a quarter note E5, a quarter note F5, a quarter note G5, a half note rest, a quarter note G4, a quarter note F4, a quarter note E4, and a quarter note D4. The third staff begins with a quarter note C4, a quarter note B3, a quarter note A3, a quarter note G3, a half note rest, a quarter note G3, a quarter note F3, a quarter note E3, a quarter note D3, a half note rest, a quarter note C3, a quarter note B2, a quarter note A2, and a quarter note G2.

Flexibility Exercise 2

Flexibility Exercise 2 consists of seven staves of music in 4/4 time. Each staff begins with a half note G4, followed by quarter notes A4, B4, and C5, then a half note rest. The second staff continues with a quarter note D5, a quarter note E5, a quarter note F5, a quarter note G5, a half note rest, a quarter note G4, a quarter note F4, a quarter note E4, and a quarter note D4. The third staff begins with a quarter note C4, a quarter note B3, a quarter note A3, a quarter note G3, a half note rest, a quarter note G3, a quarter note F3, a quarter note E3, a quarter note D3, a half note rest, a quarter note C3, a quarter note B2, a quarter note A2, and a quarter note G2. The fourth staff begins with a quarter note G2, a quarter note F2, a quarter note E2, a quarter note D2, a half note rest, a quarter note D2, a quarter note E2, a quarter note F2, a quarter note G2, a half note rest, a quarter note G2, a quarter note F2, a quarter note E2, and a quarter note D2. The fifth staff begins with a quarter note C3, a quarter note B2, a quarter note A2, a quarter note G2, a half note rest, a quarter note G2, a quarter note F2, a quarter note E2, a quarter note D2, a half note rest, a quarter note C3, a quarter note B2, a quarter note A2, and a quarter note G2. The sixth staff begins with a quarter note G2, a quarter note F2, a quarter note E2, a quarter note D2, a half note rest, a quarter note D2, a quarter note E2, a quarter note F2, a quarter note G2, a half note rest, a quarter note G2, a quarter note F2, a quarter note E2, and a quarter note D2. The seventh staff begins with a quarter note C3, a quarter note B2, a quarter note A2, a quarter note G2, a half note rest, a quarter note G2, a quarter note F2, a quarter note E2, a quarter note D2, a half note rest, a quarter note C3, a quarter note B2, a quarter note A2, and a quarter note G2.

Flexibility Exercise 3

Musical notation for Flexibility Exercise 3, consisting of six staves of music. The notation is written in treble clef with a key signature of one flat (B \flat). The exercise features a series of melodic lines with various intervals and accidentals, including a final staff with a whole note and a fermata.

Flexibility Exercise 4

Musical notation for Flexibility Exercise 4, consisting of five staves of music. The notation is written in treble clef with a key signature of one flat (B \flat). The exercise features a series of melodic lines with various intervals and accidentals, including a final staff with a whole note and a fermata.

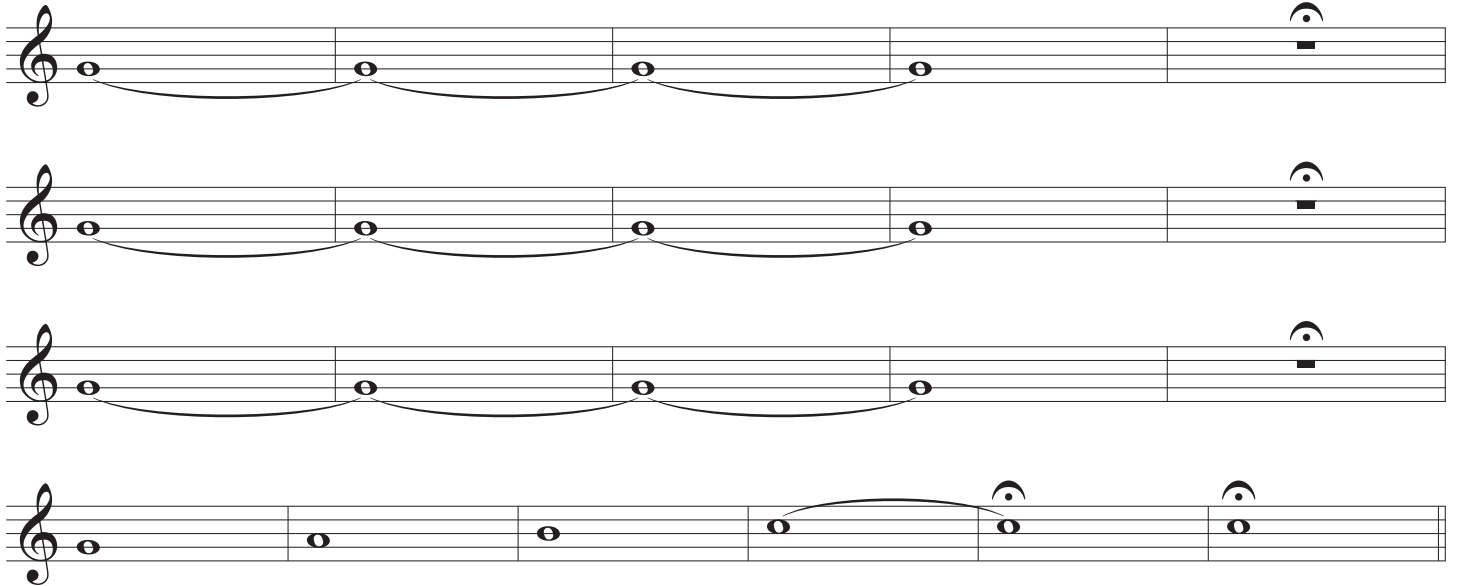
CSHS Marching Band Warm Up

Trumpet in B \flat - Tuning & Chorales

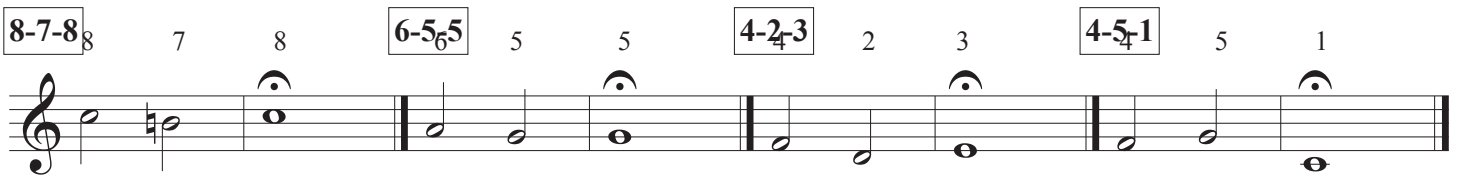
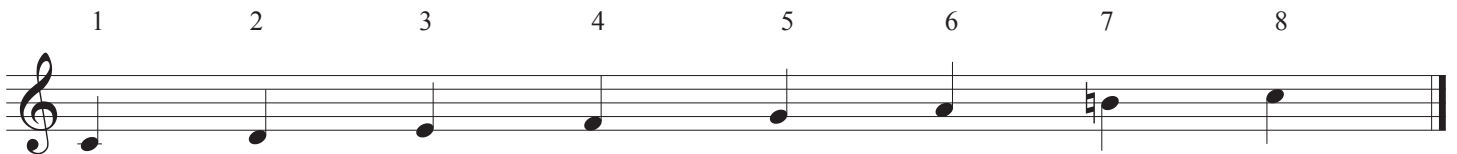
Tuning Notes



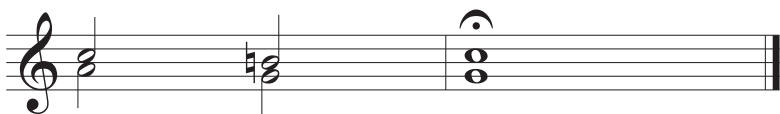
Tuning Sequence



3 Note Chorale



B \flat - 3 Note Chorale



Bb Chorale - Chester

Musical score for Bb Chorale - Chester, consisting of three staves of music. The first staff begins with a *mf* dynamic and contains measures 1 through 6. The second staff continues with measures 7 through 12, marked with a *mp* dynamic. The third staff concludes with measures 13 through 16, marked with a *f* dynamic. The music features various chordal textures and melodic lines, with some notes beamed together and slurs over phrases.

F Chorale - Be Thou My Vision

Musical score for F Chorale - Be Thou My Vision, consisting of two staves of music. The first staff contains measures 1 through 9, and the second staff contains measures 10 through 17. The music is written in 3/4 time and features a steady melodic line with accompaniment chords. Dynamics are not explicitly marked, but the piece concludes with a final chord.

E \flat Bach Chorale

Musical score for E \flat Bach Chorale, consisting of three staves of music. The first staff contains measures 1 through 5, the second staff contains measures 6 through 10, and the third staff contains measures 11 through 13. The music is in 4/4 time and features a complex, flowing melodic line with accompaniment chords. Dynamics are not explicitly marked, but the piece concludes with a final chord.

CSHS Marching Band Warm Up

Articulations - Trumpet in B \flat

1 3 5 7

9 11 13

15 17

19 21 23

25 28

30 32

34 37

39

Detailed description of the musical score: The score is written for a single trumpet in B-flat in 4/4 time. It consists of eight staves of music, each beginning with a measure number in a box. The exercises are as follows: Staff 1: Measures 1-7. Measure 1: Chord of G2, B2, D3. Measure 3: Chord of G2, B2. Measure 5: Chord of G2, B2, D3. Measure 7: Chord of G2, B2, D3 with accents (>). Staff 2: Measures 9-13. Measure 9: Chord of G2, B2, D3. Measure 11: Chord of G2, B2, D3. Measure 13: Chord of G2, B2, D3 with accents (>). Staff 3: Measures 15-17. Measure 15: Chord of G2, B2, D3 with accents (^). Measure 17: Chord of G2, B2, D3 with triplets (3). Staff 4: Measures 19-23. Measure 19: Chord of G2, B2, D3 with triplets (3). Measure 21: Chord of G2, B2, D3. Measure 23: Chord of G2, B2, D3 with triplets (3). Staff 5: Measures 25-28. Measure 25: Chord of G2, B2, D3. Measure 28: Chord of G2, B2, D3 with accents (^). Staff 6: Measures 30-32. Measure 30: Chord of G2, B2, D3 with accents (>). Measure 32: Chord of G2, B2, D3 with triplets (3). Staff 7: Measures 34-37. Measure 34: Chord of G2, B2, D3 with accents (^). Measure 37: Chord of G2, B2, D3 with accents (^). Staff 8: Measure 39. Measure 39: Chord of G2, B2, D3 with accents (^).