

# CSHS Marching Band Warm Up

## Long Tones for Horn/Mellophone

### 9 Count Tones on F Concert

Two staves of music for 9 count tones on F concert. The first staff is in 4/4 time with a treble clef. It contains four measures of music: a half note F4, a half note G4, a half note A4, and a half note B4. The second staff is in 4/4 time with a bass clef. It contains four measures of music: a half note F3, a half note G3, a half note A3, and a half note B3. Each note is held for the duration of the measure.

### 9 Count Tones on Bb Concert

Two staves of music for 9 count tones on Bb concert. The first staff is in 4/4 time with a treble clef. It contains four measures of music: a half note Bb4, a half note C5, a half note D5, and a half note Eb5. The second staff is in 4/4 time with a bass clef. It contains four measures of music: a half note Bb3, a half note C4, a half note D4, and a half note Eb4. Each note is held for the duration of the measure.

### 8 Count Tones on F Concert

Two staves of music for 8 count tones on F concert. The first staff is in 4/4 time with a treble clef. It contains four measures of music: a half note F4, a half note G4, a half note A4, and a half note B4. The second staff is in 4/4 time with a bass clef. It contains four measures of music: a half note F3, a half note G3, a half note A3, and a half note B3. Each note is held for the duration of the measure.

### 8 Count Tones on Bb Concert

Two staves of music for 8 count tones on Bb concert. The first staff is in 4/4 time with a treble clef. It contains four measures of music: a half note Bb4, a half note C5, a half note D5, and a half note Eb5. The second staff is in 4/4 time with a bass clef. It contains four measures of music: a half note Bb3, a half note C4, a half note D4, and a half note Eb4. Each note is held for the duration of the measure.



# Beautiful Sounds for Trumpet/Mellophone

Smooth Movement Through All Registers

C Major (concert pitch)

Musical notation for C Major (concert pitch) in 4/4 time. The melody consists of two phrases, each spanning four measures. The first phrase starts on middle C and moves up stepwise to G4, then descends. The second phrase starts on G4 and moves up stepwise to C5, then descends. Both phrases are marked with a slur and a fermata over the final note.

B $\flat$  Major (concert pitch)

6

Musical notation for B $\flat$  Major (concert pitch) in 4/4 time. The melody consists of two phrases, each spanning four measures. The first phrase starts on B $\flat$ 3 and moves up stepwise to F4, then descends. The second phrase starts on F4 and moves up stepwise to B $\flat$ 4, then descends. Both phrases are marked with a slur and a fermata over the final note.

E $\flat$  Major (concert pitch)

11

Musical notation for E $\flat$  Major (concert pitch) in 4/4 time. The melody consists of two phrases, each spanning four measures. The first phrase starts on E $\flat$ 3 and moves up stepwise to B $\flat$ 3, then descends. The second phrase starts on B $\flat$ 3 and moves up stepwise to E $\flat$ 4, then descends. Both phrases are marked with a slur and a fermata over the final note.

A $\flat$  Major (concert pitch)

16

Musical notation for A $\flat$  Major (concert pitch) in 4/4 time. The melody consists of two phrases, each spanning four measures. The first phrase starts on A $\flat$ 3 and moves up stepwise to E $\flat$ 4, then descends. The second phrase starts on E $\flat$ 4 and moves up stepwise to A $\flat$ 4, then descends. Both phrases are marked with a slur and a fermata over the final note.

F Major (concert pitch)

21

Musical notation for F Major (concert pitch) in 4/4 time. The melody consists of two phrases, each spanning four measures. The first phrase starts on F3 and moves up stepwise to C4, then descends. The second phrase starts on C4 and moves up stepwise to F4, then descends. Both phrases are marked with a slur and a fermata over the final note.

G Major (concert pitch)

26

Musical notation for G Major (concert pitch) in 4/4 time. The melody consists of two phrases, each spanning four measures. The first phrase starts on G3 and moves up stepwise to D4, then descends. The second phrase starts on D4 and moves up stepwise to G4, then descends. Both phrases are marked with a slur and a fermata over the final note.

F Major (concert pitch)

31

Musical notation for F Major (concert pitch) in 4/4 time. The melody consists of two phrases, each spanning four measures. The first phrase starts on F3 and moves up stepwise to C4, then descends. The second phrase starts on C4 and moves up stepwise to F4, then descends. Both phrases are marked with a slur and a fermata over the final note.

# CSHS Marching Band Warm Up

## Flexabilitiy/Scales for Mellophone

### Flexibility Exercise 1

Flexibility Exercise 1 is written in 4/4 time and consists of three staves. The first staff begins with a half note G4, followed by quarter notes A4, B4, and C5, then a half note D5 with a fermata. This is followed by a quarter rest, then a half note E5 with a sharp sign, quarter notes F5, G5, and A5, then a half note B5 with a sharp sign and a fermata. The second staff starts with a half note C5 with a flat sign and a fermata, followed by quarter notes B4, A4, G4, and F4, then a half note E4 with a fermata. This is followed by a quarter rest, then quarter notes D4, C4, B3, and A3, then a half note G3 with a flat sign and a fermata. The third staff begins with a half note F3 with a sharp sign, quarter notes E3, D3, and C3, then a half note B2 with a sharp sign and a fermata. This is followed by a quarter rest, then quarter notes A2, G2, and F2, then a half note E2 with a fermata. The exercise concludes with a whole note G2 with a fermata.

### Flexibility Exercise 2

Flexibility Exercise 2 is written in 4/4 time and consists of seven staves. The first staff begins with a half note G3 with a flat sign and a fermata, followed by quarter notes A3, B3, and C4, then a half note D4 with a fermata. The second staff starts with a half note E4 with a flat sign and a fermata, followed by quarter notes F4, G4, and A4, then a half note B4 with a flat sign and a fermata. The third staff begins with a half note C5 with a flat sign and a fermata, followed by quarter notes B4, A4, and G4, then a half note F4 with a flat sign and a fermata. The fourth staff starts with a half note E4 with a flat sign and a fermata, followed by quarter notes D4, C4, and B3, then a half note A3 with a flat sign and a fermata. The fifth staff begins with a half note G3 with a flat sign and a fermata, followed by quarter notes A3, B3, and C4, then a half note D4 with a fermata. The sixth staff starts with a half note E4 with a flat sign and a fermata, followed by quarter notes F4, G4, and A4, then a half note B4 with a flat sign and a fermata. The seventh staff begins with a half note C5 with a flat sign and a fermata, followed by quarter notes B4, A4, and G4, then a half note F4 with a flat sign and a fermata. The exercise concludes with a whole note G2 with a fermata.

**Flexibility Exercise 3**

Musical notation for Flexibility Exercise 3, consisting of six staves of music in a single system. The music is written in a single melodic line on a treble clef staff with a key signature of one flat (Bb). The exercise features a series of slurs and ties across the staves, with various rhythmic values including quarter, eighth, and sixteenth notes, and rests. The notation includes accidentals such as sharps and naturals, and ends with a double bar line.

**Flexibility Exercise 4**

Musical notation for Flexibility Exercise 4, consisting of five staves of music in a single system. The music is written in a single melodic line on a treble clef staff with a key signature of one flat (Bb). The exercise features a series of slurs and ties across the staves, with various rhythmic values including quarter, eighth, and sixteenth notes, and rests. The notation includes accidentals such as sharps and naturals, and ends with a double bar line.

# CSHS Marching Band Warm Up

## Articulations - Mellophone

1 3 5 7

9 11 13

15 17

19 21 23

25 28

30 32

34 37

39

Detailed description: This musical score is for a mellophone part in a marching band warm-up. It consists of ten lines of music, each starting with a measure number in a box. The music is written in 4/4 time and features various articulation exercises. Measures 1-4 show quarter notes with accents. Measures 5-8 show eighth notes with accents. Measures 9-12 show quarter notes with accents. Measures 13-16 show eighth notes with accents. Measures 17-20 show quarter notes with accents. Measures 21-24 show eighth notes with accents. Measures 25-28 show quarter notes with accents. Measures 29-32 show quarter notes with accents. Measures 33-36 show quarter notes with accents. Measures 37-40 show quarter notes with accents.

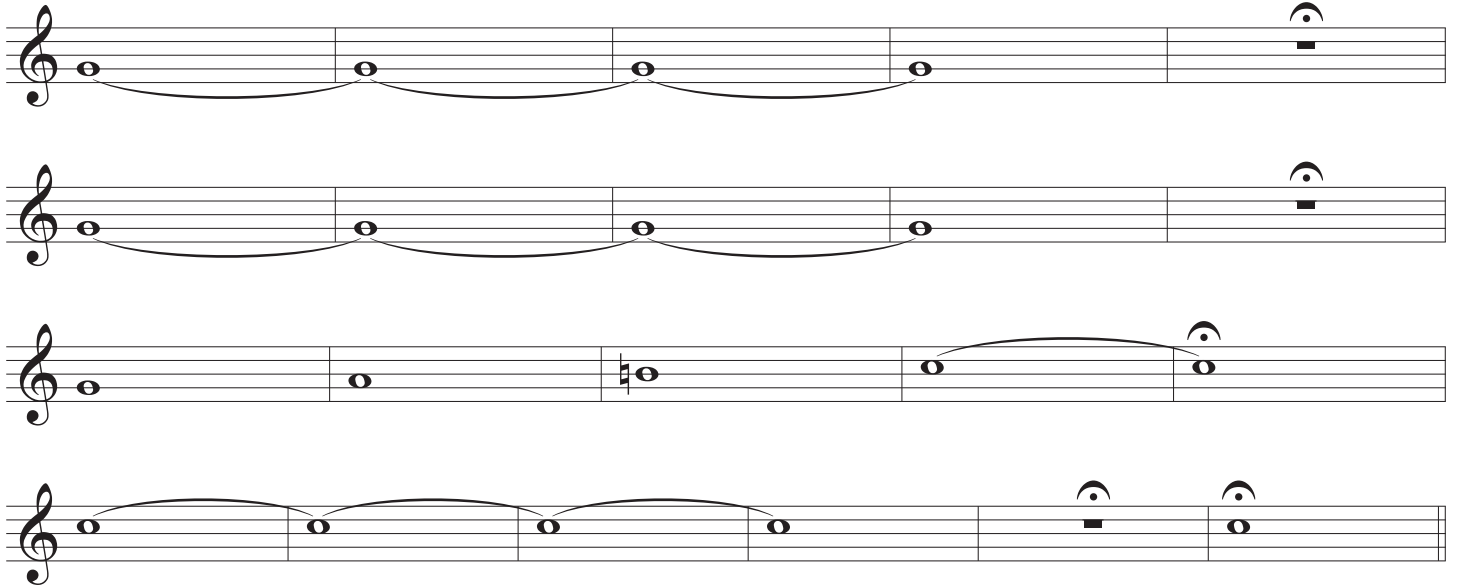
# CSHS Marching Band Warm Up

## Mellophone - Tuning & Chorales

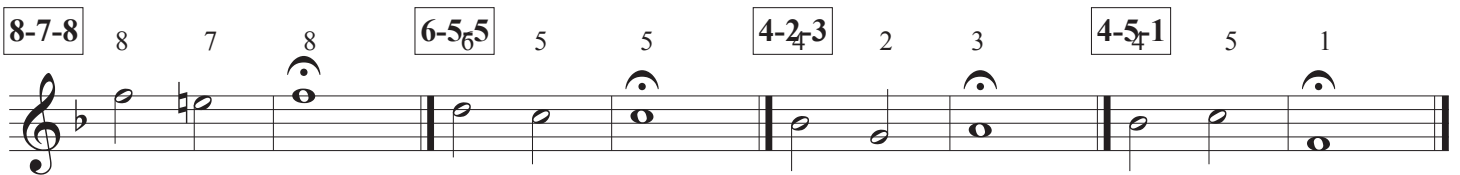
### Tuning Notes



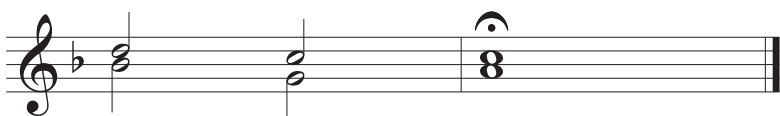
### Tuning Sequence



### 3 Note Chorale



### Bb - 3 Note Chorale



**Bb Chorale - Chester**

Musical notation for the Bb Chorale 'Chester' in B-flat major, 4/4 time. The piece consists of 16 measures. The first measure is a whole rest. Measures 2-6 are marked *mf* and feature a melodic line with slurs and fingerings 2, 3, 4, 5, and 6. Measures 7-12 are marked *mp* and continue the melodic line with slurs and fingerings 7, 8, 9, 10, 11, and 12. Measures 13-16 are marked *mf* and *f*, with a melodic line that includes a sharp sign (F#) in measure 14 and ends with a double bar line. The key signature has one flat (B-flat).

**F Chorale - Be Thou My Vision**

Musical notation for the F Chorale 'Be Thou My Vision' in F major, 3/4 time. The piece consists of 17 measures. Measures 2-9 are marked *mf* and feature a melodic line with slurs and fingerings 2, 3, 4, 5, 6, 7, 8, and 9. Measures 10-17 are marked *mp* and continue the melodic line with slurs and fingerings 10, 11, 12, 13, 14, 15, 16, and 17. The key signature has two flats (F major).

**Eb Bach Chorale**

Musical notation for the Eb Bach Chorale in E-flat major, 4/4 time. The piece consists of 13 measures. Measures 2-5 are marked *mf* and feature a melodic line with slurs and fingerings 2, 3, 4, and 5. Measures 6-10 are marked *mp* and continue the melodic line with slurs and fingerings 6, 7, 8, 9, and 10. Measures 11-13 are marked *f* and feature a melodic line with slurs and fingerings 11, 12, and 13. The key signature has three flats (E-flat major).