

CSHS Marching Band Warm Up

Long Tones for Flute

9 Count Tones on F Concert

Two staves of music in 4/4 time. The first staff starts with a treble clef and a 4/4 time signature. The melody consists of nine measures, each containing a half note with a slur above it. The notes are: F4 (quarter rest), G4 (quarter rest), A4 (quarter rest), Bb4 (quarter rest), C5 (quarter rest), D5 (quarter rest), E5 (quarter rest), F5 (quarter rest), and G5 (quarter rest). The second staff continues the sequence with the same notes and rests.

9 Count Tones on Bb Concert

Two staves of music in 4/4 time. The first staff starts with a treble clef and a Bb key signature. The melody consists of nine measures, each containing a half note with a slur above it. The notes are: Bb4 (quarter rest), C5 (quarter rest), D5 (quarter rest), Eb5 (quarter rest), F5 (quarter rest), G5 (quarter rest), Ab5 (quarter rest), Bb5 (quarter rest), and C6 (quarter rest). The second staff continues the sequence with the same notes and rests.

8 Count Tones on F Concert

Two staves of music in 4/4 time. The first staff starts with a treble clef. The melody consists of eight measures, each containing a half note with a slur above it. The notes are: F4 (quarter rest), G4 (quarter rest), A4 (quarter rest), Bb4 (quarter rest), C5 (quarter rest), D5 (quarter rest), E5 (quarter rest), and F5 (quarter rest). The second staff continues the sequence with the same notes and rests.

8 Count Tones on Bb Concert

Two staves of music in 4/4 time. The first staff starts with a treble clef and a Bb key signature. The melody consists of eight measures, each containing a half note with a slur above it. The notes are: Bb4 (quarter rest), C5 (quarter rest), D5 (quarter rest), Eb5 (quarter rest), F5 (quarter rest), G5 (quarter rest), Ab5 (quarter rest), and Bb5 (quarter rest). The second staff continues the sequence with the same notes and rests.

Beautiful Sounds for Flute

Smooth Movement Through All Registers

C Major (concert pitch)

Musical notation for C Major (concert pitch) in 4/4 time. The piece consists of two phrases, each with a slur. The first phrase starts on middle C and ascends to G4. The second phrase starts on G4 and descends to C4. The piece concludes with a whole rest.

B \flat Major (concert pitch)

Musical notation for B \flat Major (concert pitch) in 4/4 time. The piece consists of two phrases, each with a slur. The first phrase starts on B \flat 3 and ascends to F4. The second phrase starts on F4 and descends to B \flat 2. The piece concludes with a whole rest.

E \flat Major (concert pitch)

Musical notation for E \flat Major (concert pitch) in 4/4 time. The piece consists of two phrases, each with a slur. The first phrase starts on E \flat 3 and ascends to B \flat 4. The second phrase starts on B \flat 4 and descends to E \flat 2. The piece concludes with a whole rest.

A \flat Major (concert pitch)

Musical notation for A \flat Major (concert pitch) in 4/4 time. The piece consists of two phrases, each with a slur. The first phrase starts on A \flat 3 and ascends to E \flat 4. The second phrase starts on E \flat 4 and descends to A \flat 2. The piece concludes with a whole rest.

F Major (concert pitch)

Musical notation for F Major (concert pitch) in 4/4 time. The piece consists of two phrases, each with a slur. The first phrase starts on F3 and ascends to C4. The second phrase starts on C4 and descends to F2. The piece concludes with a whole rest.

G Major (concert pitch)

Musical notation for G Major (concert pitch) in 4/4 time. The piece consists of two phrases, each with a slur. The first phrase starts on G3 and ascends to D4. The second phrase starts on D4 and descends to G2. The piece concludes with a whole rest.

F Major (concert pitch)

Musical notation for F Major (concert pitch) in 4/4 time. The piece consists of two phrases, each with a slur. The first phrase starts on F3 and ascends to C4. The second phrase starts on C4 and descends to F2. The piece concludes with a whole rest.

CSHS Marching Band Warm Up

Flexibility/Scales for Flute 1

Flexibility Exercise 1

Flexibility Exercise 1 consists of three staves of music in 4/4 time with a key signature of one flat (Bb). The first staff contains four measures of eighth-note patterns, each with a slur and a fermata. The second staff contains four measures of eighth-note patterns, also with slurs and fermatas. The third staff contains four measures, with the final measure featuring a whole note with a fermata.

Flexibility Exercise 2

Flexibility Exercise 2 consists of seven staves of music in 4/4 time with a key signature of two flats (Bb, Eb). Each staff contains a single measure of music with a slur and a fermata. The first six staves feature eighth-note patterns, while the seventh staff features a whole note with a fermata.

Flexibility Exercise 3

Musical notation for Flexibility Exercise 3, consisting of six staves of music in B-flat major. The first five staves contain melodic lines with various slurs and articulations, including eighth and sixteenth notes. The sixth staff contains a few whole notes with slurs.

Flexibility Exercise 4

Musical notation for Flexibility Exercise 4, consisting of five staves of music in B-flat major. The first four staves contain melodic lines with various slurs and articulations, including eighth and sixteenth notes. The fifth staff contains a few whole notes with slurs.

CSHS Marching Band Warm Up

Flexibility/Scales for Flute 2

Flexibility Exercise 1

Musical notation for Flexibility Exercise 1, Flute 2 part. The exercise is in 4/4 time and B-flat major. It consists of three staves of music. The first two staves feature eighth-note patterns with various accidentals (flats and sharps) and slurs. The third staff concludes with a half-note chord and a final whole-note chord.

Flexibility Exercise 2

Musical notation for Flexibility Exercise 2, Flute 2 part. The exercise is in 4/4 time and B-flat major. It consists of seven staves of music. Each staff begins with a long slur over a sequence of notes, followed by a final note and a quarter rest. The notes and accidentals vary across the staves, including flats, sharps, and naturals.

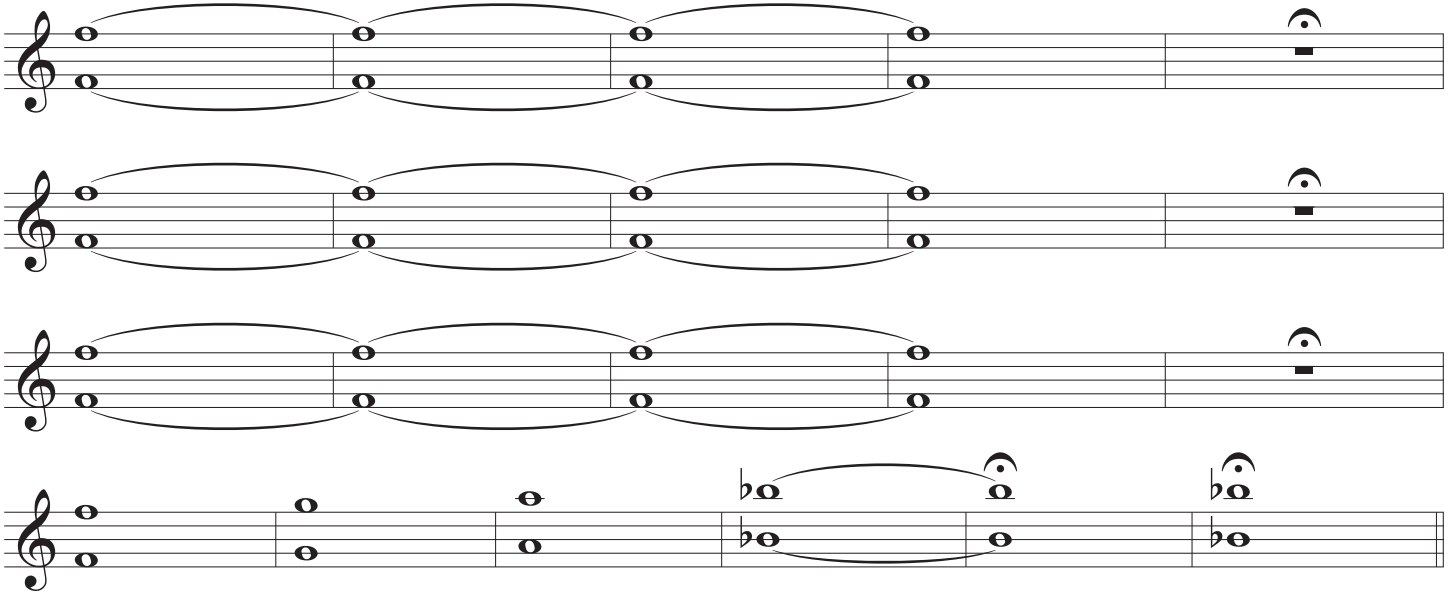
CSHS Marching Band Warm Up

Flute - Tuning & Chorales

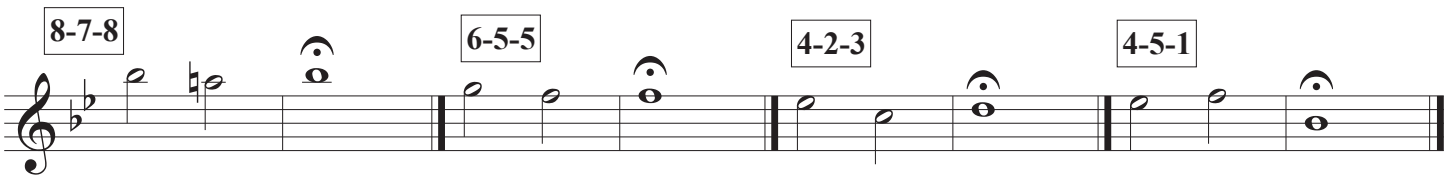
Tuning Notes



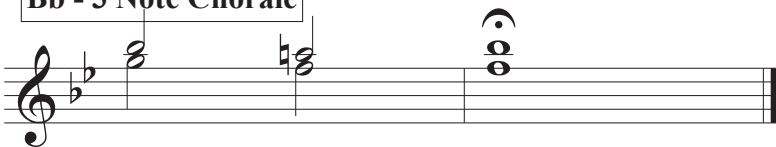
Tuning Sequence



3 Note Chorale



Bb - 3 Note Chorale



Bb Chorale - Chester

Musical score for Bb Chorale - Chester, consisting of three staves of music. The first staff begins with a treble clef, a key signature of two flats (Bb), and a common time signature. It features a series of chords and melodic lines, with dynamic markings of *mf* and *mp*. The second staff continues the piece with a *mp* dynamic. The third staff concludes the piece with a *mf* dynamic, followed by a crescendo leading to a *f* dynamic. Measure numbers 2, 3, 7, 8, 9, 10, 11, 12, 13, 14, 15, and 16 are indicated throughout the score.

F Chorale - Be Thou My Vision

Musical score for F Chorale - Be Thou My Vision, consisting of two staves of music. The first staff begins with a treble clef, a key signature of one flat (F), and a 3/4 time signature. It features a series of chords and melodic lines, with dynamic markings of *mf* and *f*. The second staff continues the piece with a *f* dynamic. Measure numbers 2, 3, 4, 5, 6, 7, 8, 9, 10, 11, 12, 13, 14, 15, 16, and 17 are indicated throughout the score.

Eb Bach Chorale

Musical score for Eb Bach Chorale, consisting of three staves of music. The first staff begins with a treble clef, a key signature of three flats (Eb), and a 4/4 time signature. It features a series of chords and melodic lines, with dynamic markings of *mf* and *f*. The second staff continues the piece with a *f* dynamic. The third staff concludes the piece with a *f* dynamic. Measure numbers 2, 3, 5, 6, 7, 8, 9, 10, 11, 12, and 13 are indicated throughout the score.

