

CSHS Marching Band Warm Up

Long Tones for Alto Sax

9 Count Tones on F Concert

Two staves of music for 9 count tones on F concert. The first staff begins with a treble clef and a 4/4 time signature. The melody consists of a sequence of notes: F4 (quarter), G4 (quarter), A4 (quarter), B4 (quarter), C5 (quarter), B4 (quarter), A4 (quarter), G4 (quarter), F4 (quarter). The notes are grouped into pairs with slurs, and there are rests between the pairs. The second staff continues the sequence: F4 (quarter), G4 (quarter), A4 (quarter), B4 (quarter), C5 (quarter), B4 (quarter), A4 (quarter), G4 (quarter), F4 (quarter).

9 Count Tones on Bb Concert

Two staves of music for 9 count tones on Bb concert. The melody consists of a sequence of notes: Bb3 (quarter), C4 (quarter), D4 (quarter), Eb4 (quarter), F4 (quarter), Eb4 (quarter), D4 (quarter), C4 (quarter), Bb3 (quarter). The notes are grouped into pairs with slurs, and there are rests between the pairs. The second staff continues the sequence: Bb3 (quarter), C4 (quarter), D4 (quarter), Eb4 (quarter), F4 (quarter), Eb4 (quarter), D4 (quarter), C4 (quarter), Bb3 (quarter).

8 Count Tones on F Concert

Two staves of music for 8 count tones on F concert. The melody consists of a sequence of notes: F4 (quarter), G4 (quarter), A4 (quarter), B4 (quarter), C5 (quarter), B4 (quarter), A4 (quarter), F4 (quarter). The notes are grouped into pairs with slurs, and there are rests between the pairs. The second staff continues the sequence: F4 (quarter), G4 (quarter), A4 (quarter), B4 (quarter), C5 (quarter), B4 (quarter), A4 (quarter), F4 (quarter).

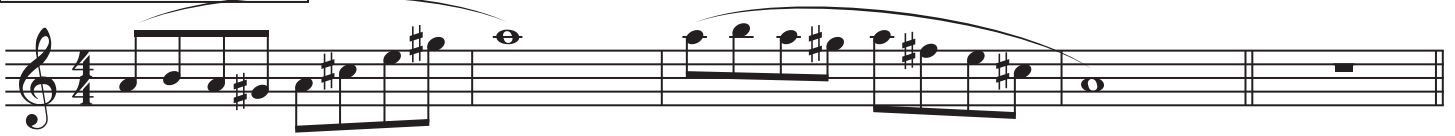
8 Count Tones on Bb Concert

Two staves of music for 8 count tones on Bb concert. The melody consists of a sequence of notes: Bb3 (quarter), C4 (quarter), D4 (quarter), Eb4 (quarter), F4 (quarter), Eb4 (quarter), D4 (quarter), Bb3 (quarter). The notes are grouped into pairs with slurs, and there are rests between the pairs. The second staff continues the sequence: Bb3 (quarter), C4 (quarter), D4 (quarter), Eb4 (quarter), F4 (quarter), Eb4 (quarter), D4 (quarter), Bb3 (quarter).

Beautiful Sounds for Alto Sax.

Smooth Movement Through All Registers

C Major (concert pitch)



B \flat Major (concert pitch)



E \flat Major (concert pitch)



A \flat Major (concert pitch)



F Major (concert pitch)



G Major (concert pitch)



F Major (concert pitch)



CSHS Marching Band Warm Up

Flexibility/Scales for Alto Sax 1

Flexibility Exercise 1

Musical notation for Flexibility Exercise 1, Alto Sax 1. The exercise is written in 4/4 time and consists of three staves. The first staff begins with a treble clef and a key signature of one sharp (F#). The second staff continues the exercise with a key signature change to one flat (Bb). The third staff concludes the exercise with a key signature change to one flat (Bb) and ends with a whole note chord.

Flexibility Exercise 2

Musical notation for Flexibility Exercise 2, Alto Sax 1. The exercise is written in 4/4 time and consists of seven staves. The first staff begins with a treble clef and a key signature of one sharp (F#). The second staff continues the exercise with a key signature change to one sharp (F#). The third staff continues the exercise with a key signature change to one flat (Bb). The fourth staff continues the exercise with a key signature change to one flat (Bb). The fifth staff continues the exercise with a key signature change to one flat (Bb). The sixth staff continues the exercise with a key signature change to one flat (Bb). The seventh staff concludes the exercise with a key signature change to one flat (Bb) and ends with a whole note chord.

Flexibility Exercise 3

Musical notation for Flexibility Exercise 3, consisting of six staves of music. The first five staves contain complex melodic lines with various slurs and ties, including some notes marked with 'x'. The sixth staff concludes the exercise with a whole note chord and a fermata.

Flexibility Exercise 4

Musical notation for Flexibility Exercise 4, consisting of five staves of music. The first four staves contain melodic lines with various slurs and ties. The fifth staff concludes the exercise with a whole note chord and a fermata.

CSHS Marching Band Warm Up

Flexibility/Scales for Alto Sax 2

Flexibility Exercise 1

Musical notation for Flexibility Exercise 1, Alto Sax 2, in 4/4 time. The exercise consists of three staves of music. The first staff contains four measures of eighth-note runs with slurs. The second staff contains four measures of eighth-note runs with slurs. The third staff contains four measures of eighth-note runs with slurs, followed by a whole note rest, a half note, and a whole note.

Flexibility Exercise 2

Musical notation for Flexibility Exercise 2, Alto Sax 2, in 4/4 time. The exercise consists of seven staves of music. The first six staves contain eighth-note runs with slurs, each starting on a different pitch and moving up or down. The seventh staff contains a whole note, a half note, and a whole note.

Flexibility Exercise 3

Musical notation for Flexibility Exercise 3, consisting of six staves of music in G major. The exercise features various melodic lines with slurs and rests, designed for flexibility training. The first five staves contain continuous melodic phrases, while the sixth staff concludes with a final note and a fermata.

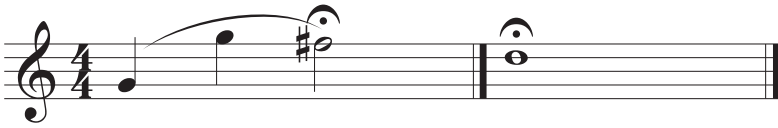
Flexibility Exercise 4

Musical notation for Flexibility Exercise 4, consisting of five staves of music in G major. The exercise features rhythmic patterns with slurs and rests, designed for flexibility training. The first four staves contain rhythmic patterns, while the fifth staff concludes with a final note and a fermata.

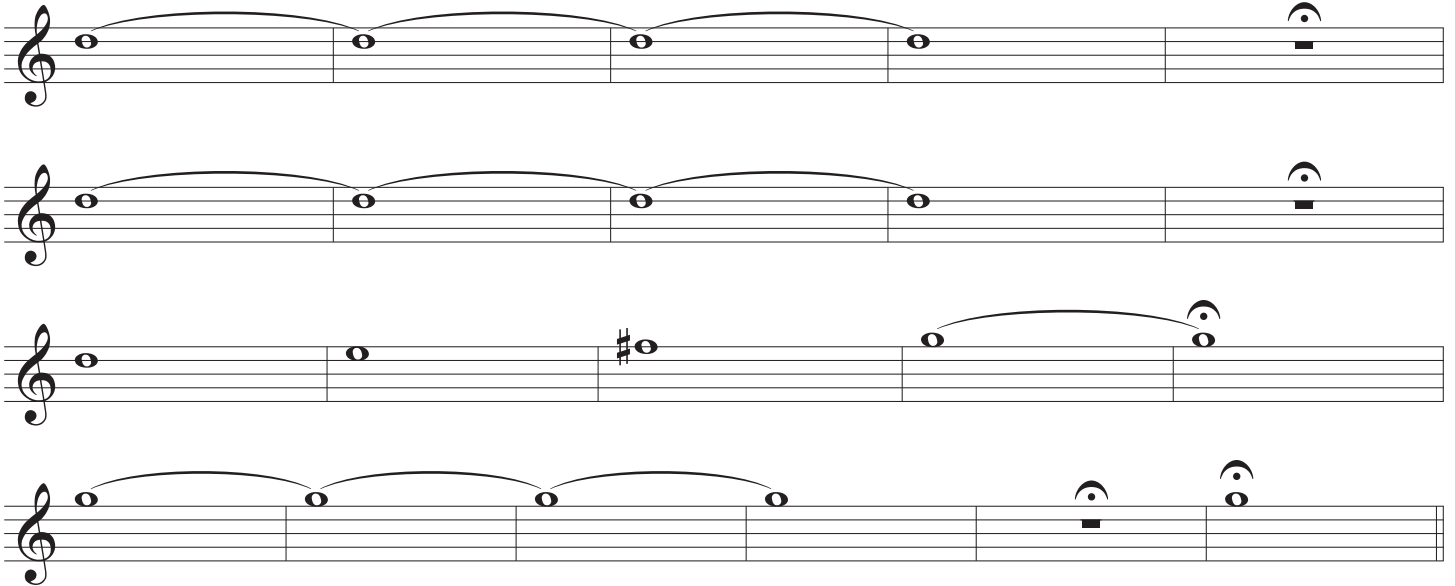
CSHS Marching Band Warm Up

Alto Sax - Tuning & Chorales

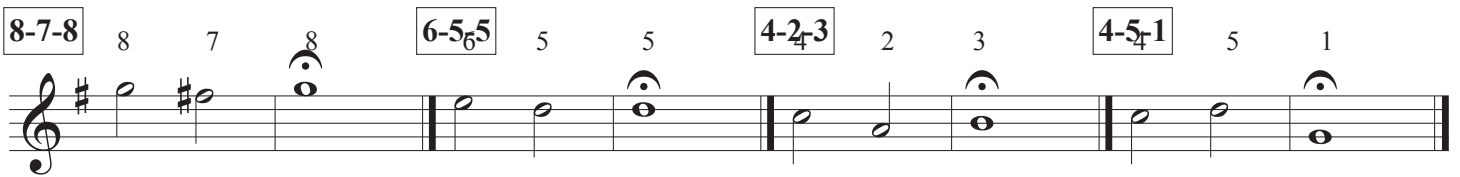
Tuning Notes



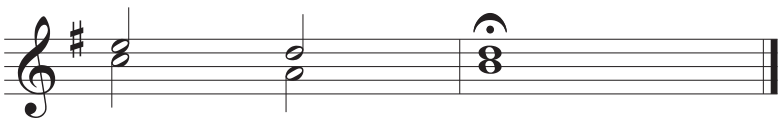
Tuning Sequence



3 Note Chorale



Bb - 3 Note Chorale



Bb Chorale - Chester

Musical score for Bb Chorale - Chester, Alto Sax. The score consists of three staves of music. The first staff begins with a treble clef, a key signature of one sharp (F#), and a common time signature. It contains measures 1 through 6, with dynamics *mf* and *mp*. The second staff contains measures 7 through 12, with dynamics *mp* and *f*. The third staff contains measures 13 through 16, with dynamics *mf* and *f*. The music features various chordal textures and melodic lines, with some notes marked with fingerings (2, 3, 4, 5, 6, 7, 8, 9, 10, 11, 12, 13).

F Chorale - Be Thou My Vision

Musical score for F Chorale - Be Thou My Vision, Alto Sax. The score consists of two staves of music. The first staff begins with a treble clef, a key signature of two sharps (F# and C#), and a 3/4 time signature. It contains measures 1 through 9, with dynamics *mf* and *f*. The second staff contains measures 10 through 17, with dynamics *mf* and *f*. The music features various chordal textures and melodic lines, with some notes marked with fingerings (2, 3, 4, 5, 6, 7, 8, 9, 10, 11, 12, 13, 14, 15, 16, 17).

Eb Bach Chorale

Musical score for Eb Bach Chorale, Alto Sax. The score consists of three staves of music. The first staff begins with a treble clef, a key signature of three flats (Bb, Eb, and Ab), and a 4/4 time signature. It contains measures 1 through 5, with dynamics *mf* and *f*. The second staff contains measures 6 through 10, with dynamics *mf* and *f*. The third staff contains measures 11 through 13, with dynamics *mf* and *f*. The music features various chordal textures and melodic lines, with some notes marked with fingerings (2, 3, 4, 5, 6, 7, 8, 9, 10, 11, 12, 13).

CSHS Marching Band Warm Up

Articulations - Alto Sax

1 3 5 7

9 11 13

15 17

19 21 23

25 28

30 32

34 37

39

Detailed description of the musical score: The score is written for Alto Saxophone in 4/4 time. It consists of nine lines of music, each starting with a measure number in a box. The exercises focus on articulation and rhythm. Line 1 (measures 1-7) includes a triplet of quarter notes (measures 1-3), a triplet of quarter notes (measures 4-6), and a triplet of quarter notes with accents (measures 7-9). Line 2 (measures 9-13) features a triplet of quarter notes (measures 9-11), a triplet of quarter notes (measures 12-14), and a triplet of quarter notes with accents (measures 15-17). Line 3 (measures 15-17) shows a triplet of quarter notes with accents (measures 15-17) and a triplet of quarter notes (measures 18-20). Line 4 (measures 19-23) contains a triplet of quarter notes (measures 19-21), a triplet of quarter notes (measures 22-24), and a triplet of quarter notes (measures 25-27). Line 5 (measures 25-28) has a triplet of quarter notes (measures 25-27) and a triplet of quarter notes with accents (measures 28-30). Line 6 (measures 30-32) includes a triplet of quarter notes with accents (measures 30-32) and a triplet of quarter notes (measures 33-35). Line 7 (measures 34-37) features a triplet of quarter notes with accents (measures 34-36) and a triplet of quarter notes with accents (measures 37-39). Line 8 (measures 39-42) shows a triplet of quarter notes with accents (measures 39-41) and a triplet of quarter notes with accents (measures 42-44).