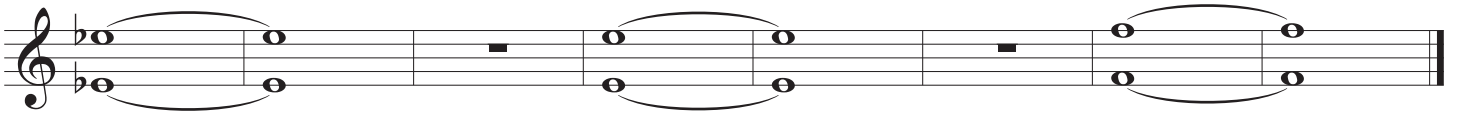
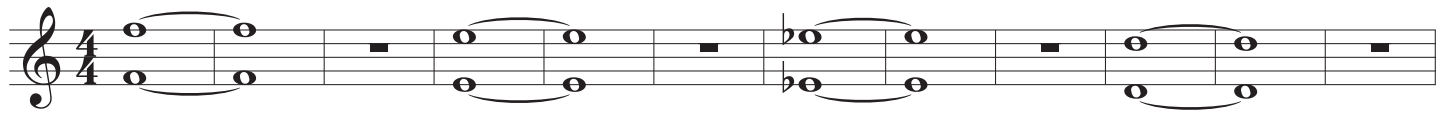


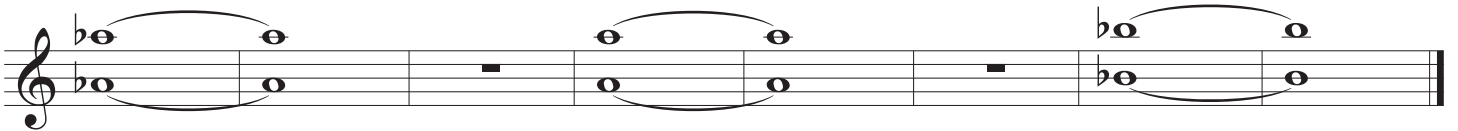
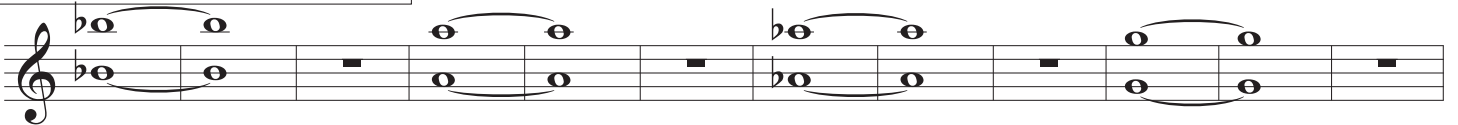
CSHS Marching Band Warm Up

Long Tones for Mallets/Oboe

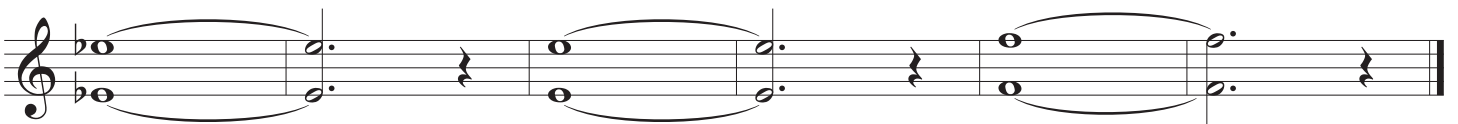
9 Count Tones on F Concert



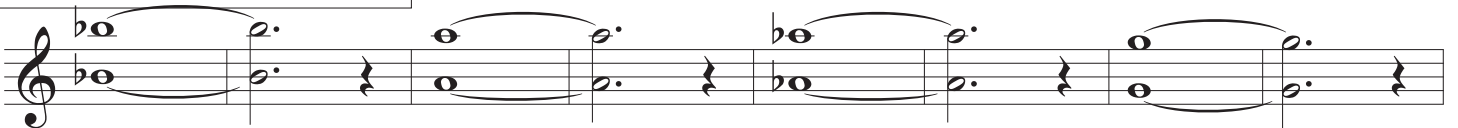
9 Count Tones on Bb Concert



8 Count Tones on F Concert



8 Count Tones on Bb Concert



Beautiful Sounds for Oboe

Smooth Movement Through All Registers

C Major (concert pitch)

Musical notation for C Major (concert pitch) in 4/4 time. The piece consists of two phrases, each with a slur. The first phrase starts on middle C and ascends to G4. The second phrase starts on G4 and descends to C4. The notation includes a treble clef, a 4/4 time signature, and a key signature of one sharp (F#).

B \flat Major (concert pitch)

Musical notation for B \flat Major (concert pitch) in 4/4 time. The piece consists of two phrases, each with a slur. The first phrase starts on B \flat 3 and ascends to F \sharp 4. The second phrase starts on F \sharp 4 and descends to B \flat 3. The notation includes a treble clef, a 4/4 time signature, and a key signature of two flats (B \flat , E \flat).

E \flat Major (concert pitch)

Musical notation for E \flat Major (concert pitch) in 4/4 time. The piece consists of two phrases, each with a slur. The first phrase starts on E \flat 3 and ascends to B \flat 4. The second phrase starts on B \flat 4 and descends to E \flat 3. The notation includes a treble clef, a 4/4 time signature, and a key signature of three flats (B \flat , E \flat , A \flat).

A \flat Major (concert pitch)

Musical notation for A \flat Major (concert pitch) in 4/4 time. The piece consists of two phrases, each with a slur. The first phrase starts on A \flat 3 and ascends to F \sharp 4. The second phrase starts on F \sharp 4 and descends to A \flat 3. The notation includes a treble clef, a 4/4 time signature, and a key signature of four flats (B \flat , E \flat , A \flat , D \flat).

F Major (concert pitch)

Musical notation for F Major (concert pitch) in 4/4 time. The piece consists of two phrases, each with a slur. The first phrase starts on F3 and ascends to C4. The second phrase starts on C4 and descends to F3. The notation includes a treble clef, a 4/4 time signature, and a key signature of one flat (B \flat).

G Major (concert pitch)

Musical notation for G Major (concert pitch) in 4/4 time. The piece consists of two phrases, each with a slur. The first phrase starts on G3 and ascends to D \sharp 4. The second phrase starts on D \sharp 4 and descends to G3. The notation includes a treble clef, a 4/4 time signature, and a key signature of two sharps (F \sharp , C \sharp).

F Major (concert pitch)

Musical notation for F Major (concert pitch) in 4/4 time. The piece consists of two phrases, each with a slur. The first phrase starts on F3 and ascends to C4. The second phrase starts on C4 and descends to F3. The notation includes a treble clef, a 4/4 time signature, and a key signature of one flat (B \flat).

Oboe

CSHS Marching Band Warm Up

Flexability/Scales

Flexability Exercise 1

Oboe

Ob.

Ob.

This exercise consists of three staves of music. The first staff is labeled 'Oboe' and the subsequent two are labeled 'Ob.'. The music is in 4/4 time and features a series of eighth-note runs with various accidentals (flats and sharps) and rests, all connected by a long slur.

Flexability Exercise 2

Ob.

Ob.

Ob.

Ob.

This exercise consists of four staves of music, all labeled 'Ob.'. The music is in 4/4 time and features a series of eighth-note runs with various accidentals (flats and sharps) and rests, all connected by a long slur.

Flexability Exercise 3

Ob.

Ob.

Ob.

Ob.

This exercise consists of four staves of music, all labeled 'Ob.'. The music is in 4/4 time and features a series of eighth-note runs with various accidentals (flats and sharps) and rests, all connected by a long slur.

Ob. Musical staff for Oboe 1, featuring a complex rhythmic pattern with eighth and sixteenth notes, including triplets and slurs.

Ob. Musical staff for Oboe 2, featuring a complex rhythmic pattern with eighth and sixteenth notes, including triplets and slurs.

Ob. Musical staff for Oboe 3, featuring a complex rhythmic pattern with eighth and sixteenth notes, including triplets and slurs.

Flexibility Exercise 4

Ob. Musical staff for Oboe 1, featuring a flexibility exercise with slurs and dynamic markings.

Ob. Musical staff for Oboe 2, featuring a flexibility exercise with slurs and dynamic markings.

Ob. Musical staff for Oboe 3, featuring a flexibility exercise with slurs and dynamic markings.

Ob. Musical staff for Oboe 4, featuring a flexibility exercise with slurs and dynamic markings.

Ob. Musical staff for Oboe 5, featuring a flexibility exercise with slurs and dynamic markings.